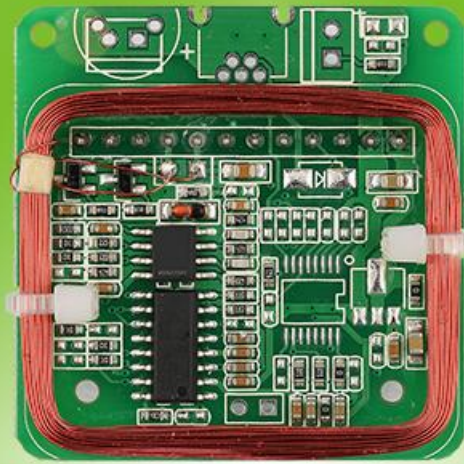


# IDM240 Series

ID Module



## Overview

IDM240 module is a 125KHz ID card reader module, It adopts advanced RF receiving circuit and embedded microcontroller, combined with efficient decoding algorithm, to complete the data reception of EM4100 and its compatible ID card. It has the characteristics of accurate card number recognition, no blind spot for card reading, low power consumption, and high cost performance. It provides TTL , Wiegand 26 and RS232 interface options. Can be customized according to customer requirements, widely used in access control system, school management, community management, membership management, asset management, anti-counterfeiting control and other fields.

## Models

Models	Interface	Voltage	Cards type
IDM240-5-T(M133)	5V	TTL	Can be set to output the card number continuously or output the card number once
IDM240-5-W (M137)	5V	WG26	Swipe the card once to output the card number once
IDM240-5-R (M139)	5V	RS232	Swipe the card once to output the card number once

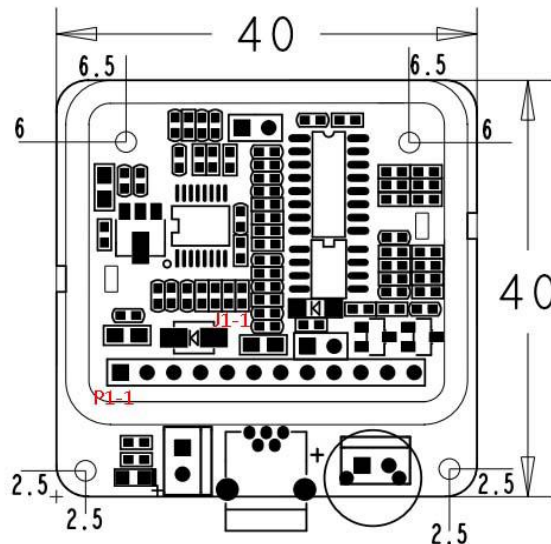
## Features

- ◇ Small size, easy to install;
- ◇ Support EM4100, TK series and their compatible cards;
- ◇ Support TTL, Wiegand 26, RS232 interface;
- ◇ It can be set to output the card number continuously or output the card number once.

## Specifications

Params	Description
Protocol	125KHz
Baud rate	9600 - 115200bit/s (optional, default 115200bit/s)
Power	DC5V (±5%)
Operating current	<100mA
Communication Interface	TTL、Wiegand 26、RS232
Module embedding	2.54mm pitch pins
Coil connecting	optional: 2.54 pin or 2.0 slot
Operating distance	> 50mm (Depends on work environments and card types)
Cards type	EM4100, TK4100 and compatible cards
Operating temperature	-10°C~+70°C
Storage temperature	-20°C~+80°C
Operating humidity	15%~90%
Size	40mm×40mm (tolerance: ±3mm)

## Size



## Pin definition

Pin No.	Name	Description
P1-1	VCC	Power
P1-2	GND	Ground
P1-3	TXD/WG0	UART serial port transmit/Weigand data0
P1-4	WG1	Weigand data1
P1-5	NC	Null
P1-6	NC	Null
P1-7	NC	Null
P1-8	ANT1	Antenna1
P1-9	ANT2	Antenna2
P1-10	A0	If = 0: continuously output serial port data; if = 1: output only once (this function is only available if the UART interface module is set, and Wiegand only outputs once)
P1-11	A1	Card status indication (1: no card indication; 0: card present indication)
P1-12	A2	Buzzer and LED drive pin, 200ms high level when sensing cards
J1-1	TX1	2.0mm Antenna Horizontal Mount Interface 1 (Optional)
J1-2	TX2	2.0mm Antenna Horizontal Mounting Interface 2 (Optional)

**TEL: +86-0755-29062099-8018**

For more contact methods and product information, please visit our website: [www.zkradio.com](http://www.zkradio.com)

Note: The pictures and content above are for reference only. Due to the updating of products, ZKRadio will not be responsible for any disputes caused by the discrepancy between the actual and the specifications. The copyright belongs to ZKRadio Electronic Technology Co., Ltd.



Public WeChat



website