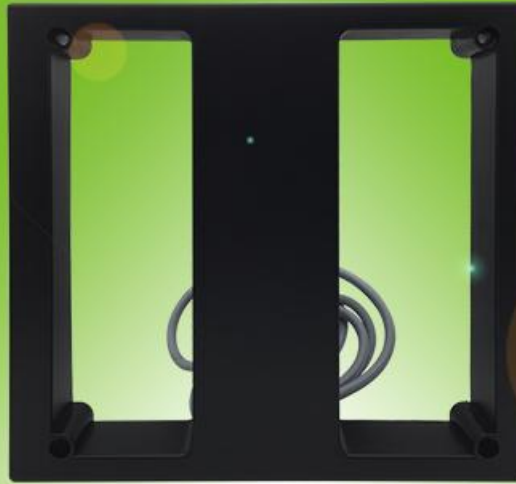


# R180E

Long-distance Access Control Reader



## Overview

R180E is a non-contact radio frequency dedicated long-distance access control card reader. It adopts an I-shaped design and is equipped with a special ID thick card. It is suitable for access control, visitor management, access gates, unmanned supermarkets, building automation, and elevator control, and other fields.

## Models

Model	Description
R180E	Support EM4100、EM4102、EM4200 compatible card; With special ID thick card; Support WG26 communication.

## Features

- ◇ High-performance microprocessor;
- ◇ Within the effective area, the data reception time is less than 120ms;
- ◇ Anti-static, anti-misconnection and other multiple protections.

## Specifications

Params.	Description
Frequency	125KHz
Working voltage	DC 12V ( $\pm 5\%$ )
Working current	Less than 200mA
Working temperature	$-10^{\circ}\text{C}\sim+60^{\circ}\text{C}$
Storage temperature	$-20^{\circ}\text{C}\sim+80^{\circ}\text{C}$
Working humidity	15% ~ 90%
Output format	WG26
Wiring Definition	Red(VCC) Black(GND) White(Wiegand) Green(Wiegand)
size	240*235*35mm (tolerance $\pm 3\text{mm}$ )

**TEL: +86-0755-29062099-8018**

For more contact methods and product information, please visit our website: [www.zkradio.com](http://www.zkradio.com)

Note: The pictures and content above are for reference only. Due to the updating of products, ZKRadio will not be responsible for any disputes caused by the discrepancy between the actual and the specifications. The copyright belongs to ZKRadio Electronic Technology Co., Ltd.



Public WeChat



website